

THERMOCOUPLE THERMOMETER (FOUR CHANNELS) CODE 0323-CT47

- Unit: °C/°F/K
- Channels are compatible with 7 types of thermocouples K, J, T, E, R, S and N
- MAX/MIN/AVG/DIF mode
- 72000 data storage
- Offset value compensation
- Data hold function
- Display backlight
- Over range indicator
- Battery level display
- Automatic power off
- Built-in Bluetooth, mobile APP is included
- Computer software is included



K-type thermocouples (included)

SPECIFICATION

Thermocouple type	J/K/T/E/R/S/N
Temperature range (electrical signal)	K: -200°C~1372°C
	J: -200°C~1200°C
	T: -200°C~400°C
	E: -150°C~1000°C
	R: 300°C~1767°C
	S: 300°C~1767°C
	N: -200°C~1300°C
Temperature accuracy* (electrical signal)	$\pm(0.2\% \cdot t + 0.6^\circ\text{C})$ (at $-10^\circ\text{C} \sim 1767^\circ\text{C}$); $\pm(0.4\% \cdot t + 1.2^\circ\text{C})$ (at $-200^\circ\text{C} \sim -10^\circ\text{C}$)
Temperature resolution	0.1°C (<1000°C); 1°C (≥1000°C)
Repeatability	$\pm(0.1\% \cdot t + 0.3^\circ\text{C})$
Response time	500ms
Logging interval	1s~24h (adjustable)
Memory capacity	72000
Data transmission	TYPE-C USB, Bluetooth
Power frequency anti-interference	50/60Hz
Input protection	60Vmax
Drop proof	1m
Power supply	3×AAA alkaline batteries, working time>30h; TYPE-C USB (only be connected to a PC power)
Operation environment	temperature: $-10^\circ\text{C} \sim 50^\circ\text{C}$ humidity: <90%RH (non-condensing)
Storage environment	temperature: $-20^\circ\text{C} \sim 60^\circ\text{C}$ humidity: <90%RH (non-condensing)
Dimension (L×W×H)	180×63×38mm
Weight	250g (including batteries)

*Accuracy is specified for ambient temperature between 18°C and 28°C, the above specification does not include thermocouple probe error

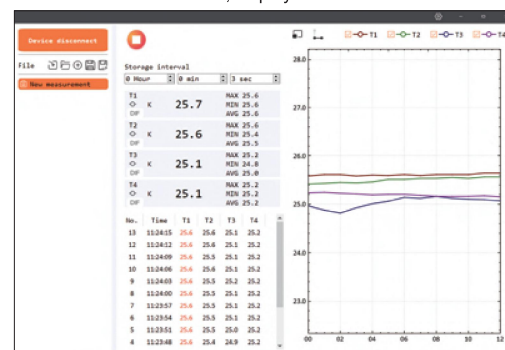
STANDARD DELIVERY

Main unit	1 pc
Battery (AAA)	3 pcs
USB cable	1 pc
K-type thermocouple (0323-K01)	4 pcs

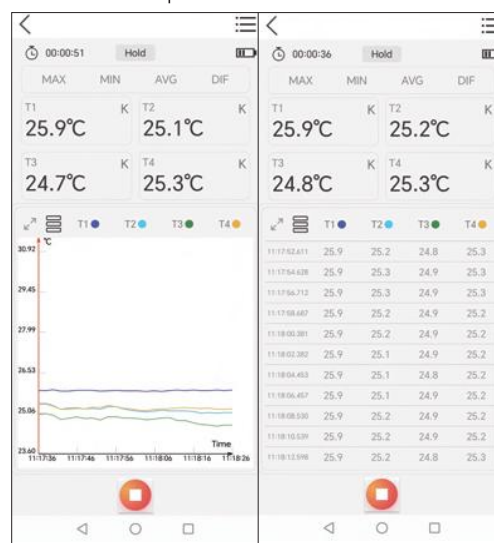
OPTIONAL ACCESSORY

Tripod	0701-TR175
--------	------------

computer software (included): connect to PC software via USB cable to collect, display and stored data



mobile APP (included): connect to mobile APP via Bluetooth to collect, display and stored data, and can export the data stored on the device



SPECIFICATION OF K-TYPE THERMOCOUPLE**

Code	Range	Accuracy	Length
0323-K01	$-30^\circ\text{C} \sim 260^\circ\text{C}$	$\pm 2.5^\circ\text{C}$	900mm

**Other models, temperature range and length of thermocouples can be customized